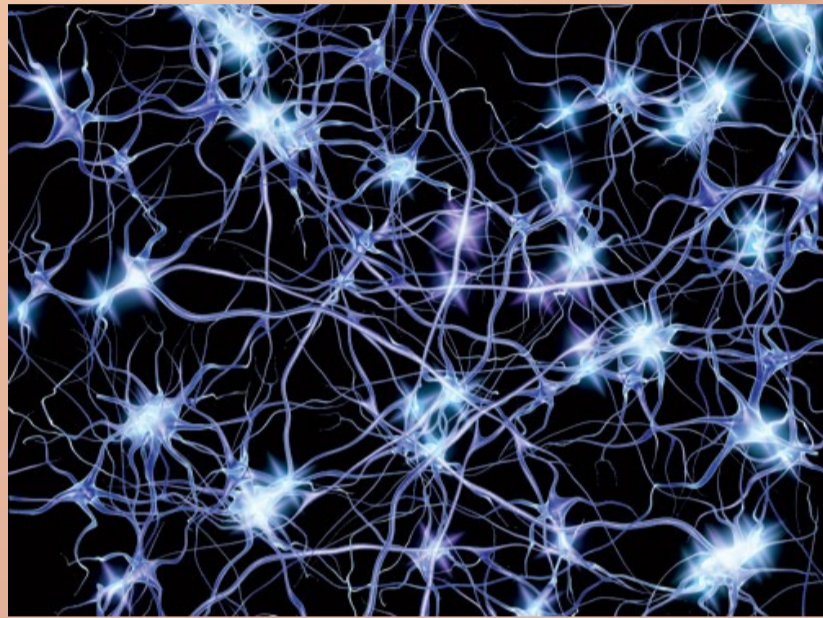
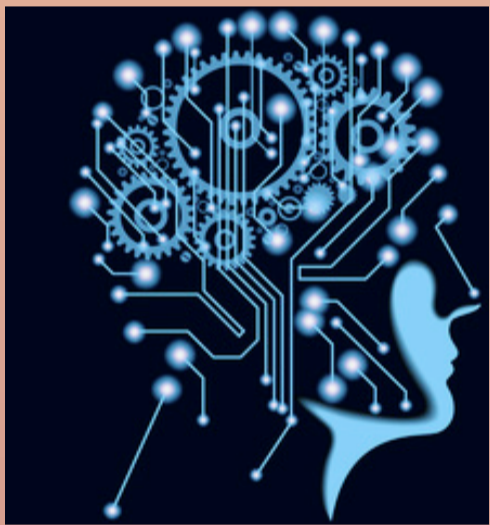


# BI-WEEKLY AI SEMINAR SERIES

Boulder Space Weather Applications of Machine Intelligence (B-SWAMI) is launching a seminar series on the latest trends in AI.



3:00 PM 3<sup>rd</sup> July 2018 at LASP  
Room W120, 3665 Discovery Dr., Boulder



Inaugural talk by  
**Dr. Thomas Berger,**  
Director, SWx-TREC

Welcome to B-SWAMI!

For this inaugural talk in the new Boulder Space Weather Applications of Machine Intelligence (B-SWAMI) seminar series I'll discuss some of the current trends in AI research with a focus on the Deep Learning systems currently making shockingly large strides in capability, some of the distinctions between the various terms in the field such as "machine learning", "Deep Learning", "Long Short Term Memory systems", etc., and some of the "first generation" applications of machine learning to the problems of solar flare and CME predication, geomagnetic storm prediction etc. Since I'll show at most 5 slides, this session is intended to be more of a discussion than a lecture. Please come prepared to talk about how you see AI and the current developments in the field being applied to space weather prediction and space science research.